

IntelliRoute with MileMaker®

Simple Installation Guide

Guide Edition 19

Before you begin:

- Ensure you have administrator access to the system you are completing the installation on.
- You have Microsoft® .NET Framework 3.5 and .NET Framework 4.0 installed
 - To install data updates, your system requires internet access.
- Ensure no prior installations of MileMaker SP32 or IntelliRoute with MileMaker are present.

Download Links for our Install Packages can be retrieved from our support team.

Submit a request to CTSupport@randmcnally.com

Send your startup code to CTLicensing@randmcnally.com

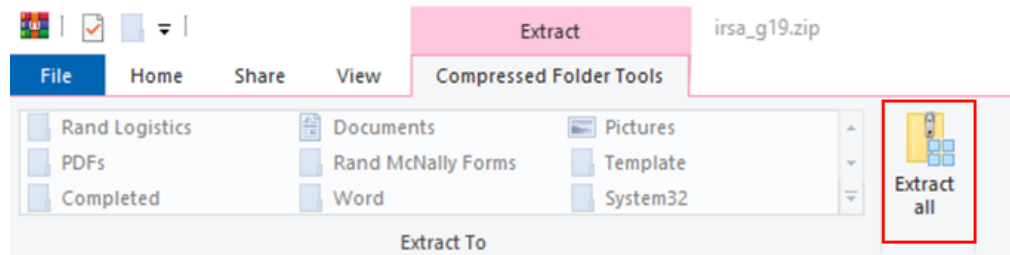
Notice to Windows Server® Users:

If you are installing IntelliRoute with MileMaker® on a server that has Remote Desktop Services, Citrix, VMWare Horizon, or Parallels installed please follow the instructions below. Otherwise, you may skip this page.

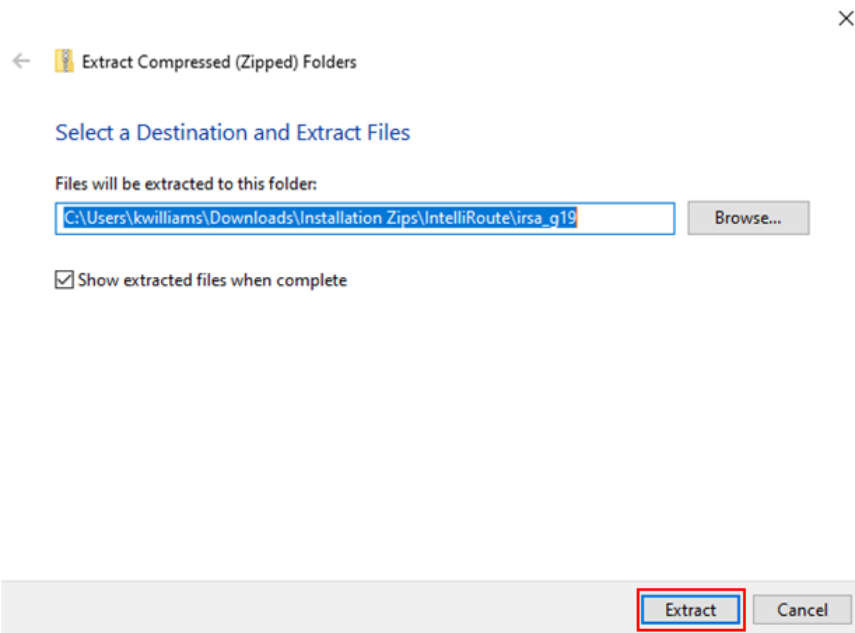
1. Open Command Prompt as an administrator
2. Enter in the following command: `change user /install`
Command Prompt should report that the system is ready to install applications.
3. Begin the IntelliRoute install process; Once the installation is complete, return to step 4.
4. Place the system back into Execute mode using the following command:
`change user /execute`

Step 1: Extracting the Contents of IntelliRoute

1. Download the IntelliRoute zip folder.
2. Extract the contents of the folder.
 - a. Double click on the ZIP folder
 - b. In the top ribbon, select "Compressed Folder Tools"
 - c. Click on Extract All



- d. Select "Extract"

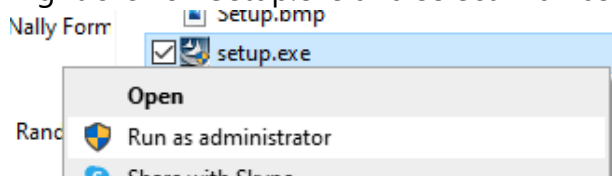


- e. A new folder should appear, proceed to step 3.

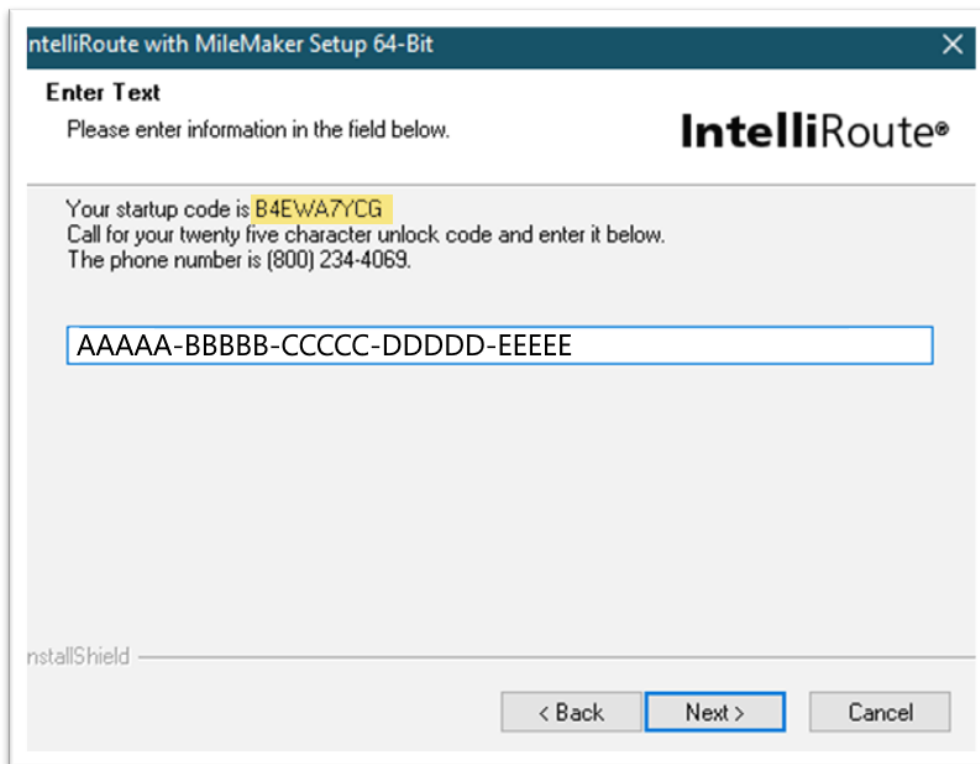
Step 2: Beginning the Installation

If you are installing this program on Windows Server alongside Remote Desktop Services, return to page 2.

1. Right click on Setup.exe and select "Run as administrator"

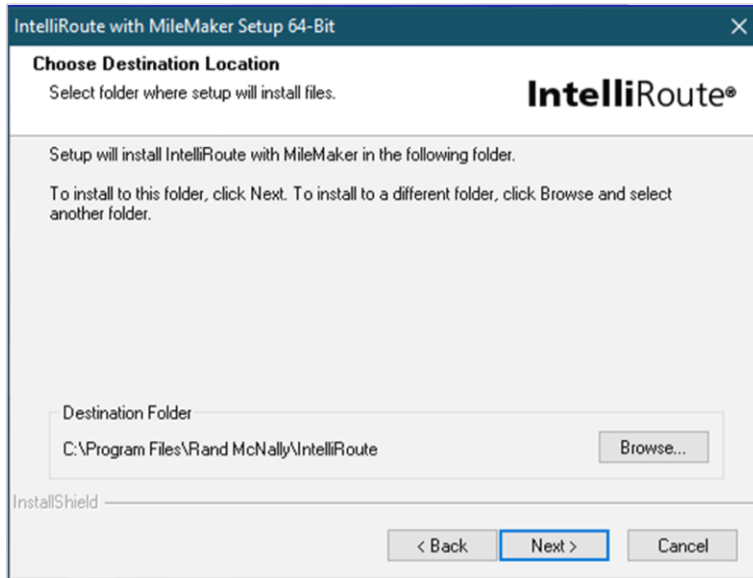


2. Provide the startup code to MileMaker Support via one of the channels below.
Toll Free: 800-234-4069 (Monday – Friday 8:30 AM – 5 PM CT)
E-Mail: CTLicensing@randmcnally.com

A screenshot of the 'IntelliRoute with MileMaker Setup 64-Bit' window. The window title bar is dark blue with a close button. The main content area has a white background. At the top left, it says 'Enter Text' and 'Please enter information in the field below.' The IntelliRoute logo is in the top right. Below this, it says 'Your startup code is B4EWA7YCG' (with 'B4EWA7YCG' highlighted in yellow), 'Call for your twenty five character unlock code and enter it below.', and 'The phone number is (800) 234-4069.' A text input field contains the placeholder text 'AAAAA-BBBBBB-CCCCCC-DDDDD-EEEE'. At the bottom, there are three buttons: '< Back', 'Next >' (highlighted in blue), and 'Cancel'. The text 'InstallShield' is visible in the bottom left corner.

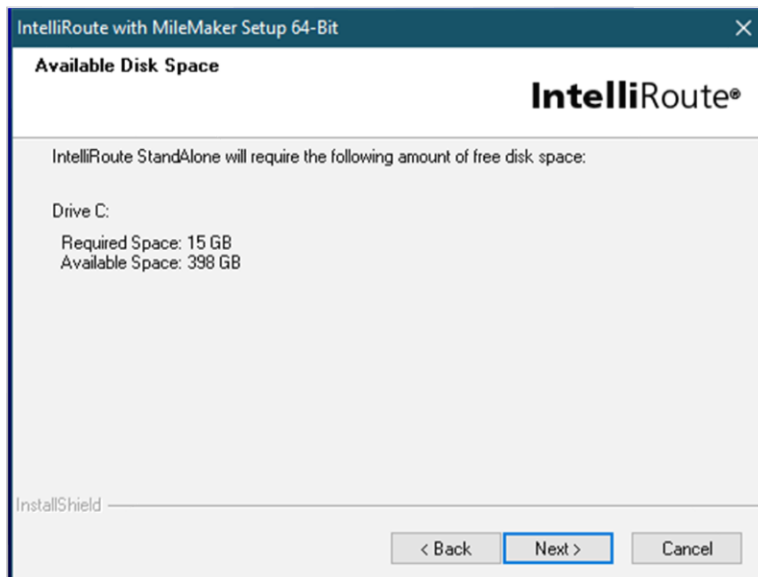
Step 3: Select your Installation Directory

Ensure the directory you are choosing has at least 15 GB of free space available for MileMaker to properly install. Once you have selected your preferred directory and location, click Next.



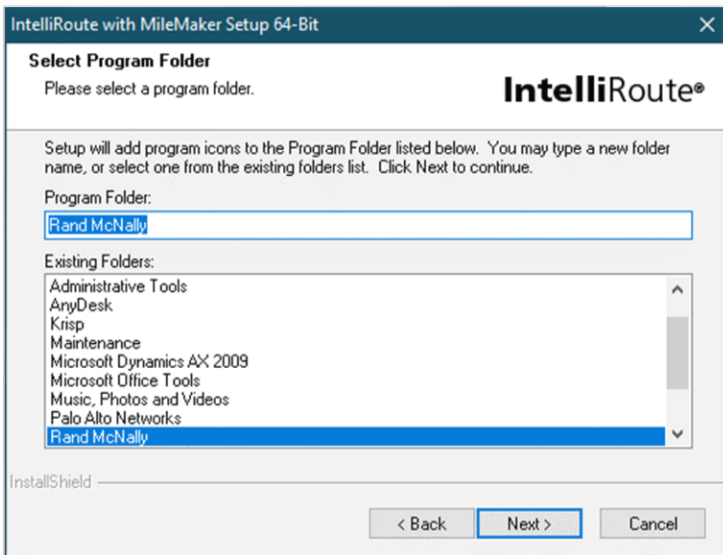
Step 4: Confirm your Installation Selections

If the following options are correct, click Next to proceed.



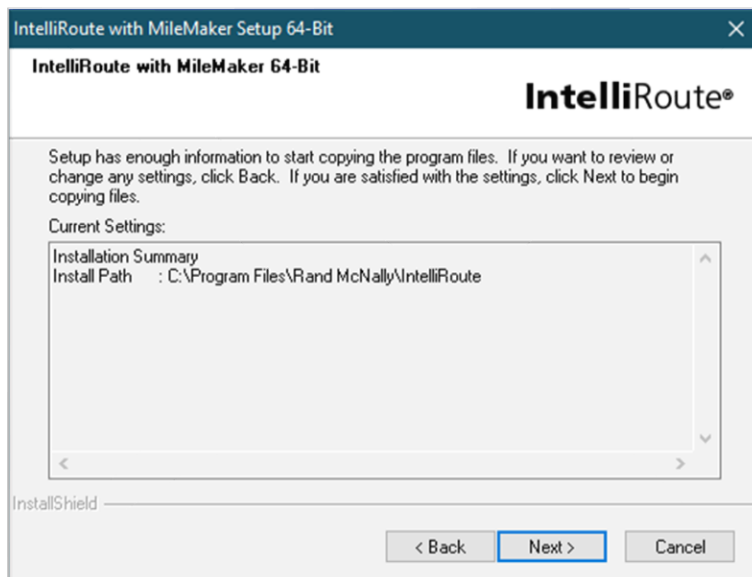
Step 4: Select a Program Folder

Select Next, no changes are required for this option. IntelliRoute will create its own folder name in your Programs Menu within the Start Menu.



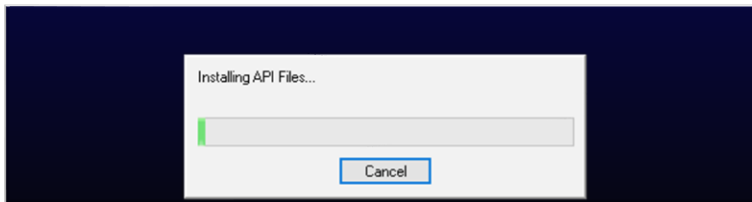
Step 5: Final Confirmation

Confirm that the directory is correct, and then select Next.



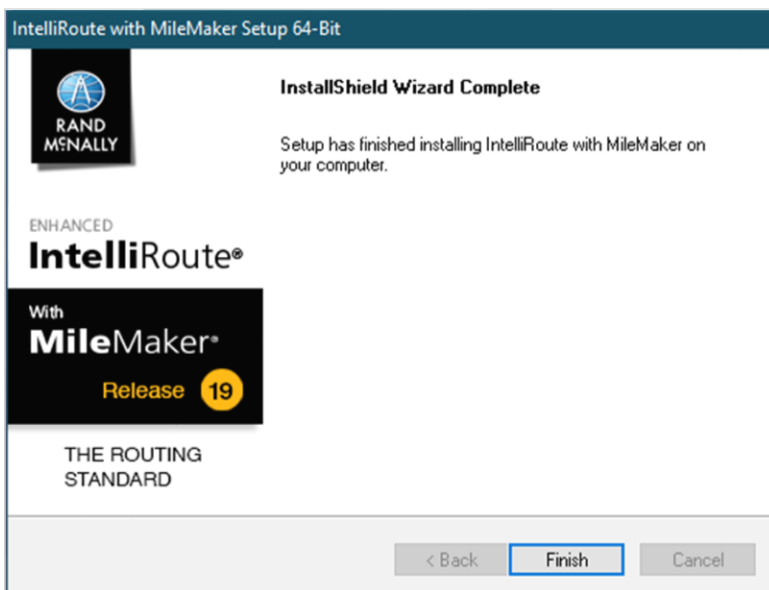
Step 5: Installing

This step may take the longest and can take up to an hour or more. This depends on the speed of your hard disk, and processor. Please allow the software to complete its installation and do not interrupt the installer.



Step 6: Install Complete

The Installation is Complete. Proceed to configuring the proper permissions for IntelliRoute.



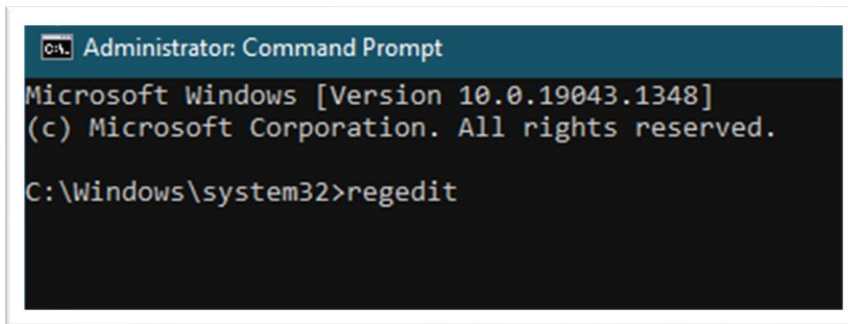
⚠ IMPORTANT! If you placed your server into Installation Mode, please return it back to EXECUTE mode. Instructions can be found on page 2.

Step 7: Configuring the Registry & Program Files folder

In some instances, the program may not launch properly due to Group Policy, Anti-Virus or system preferences. These settings can be manually configured.

Configuring the Registry -

Navigate to Regedit.msc (Use the start menu to run command prompt and run as an administrator)

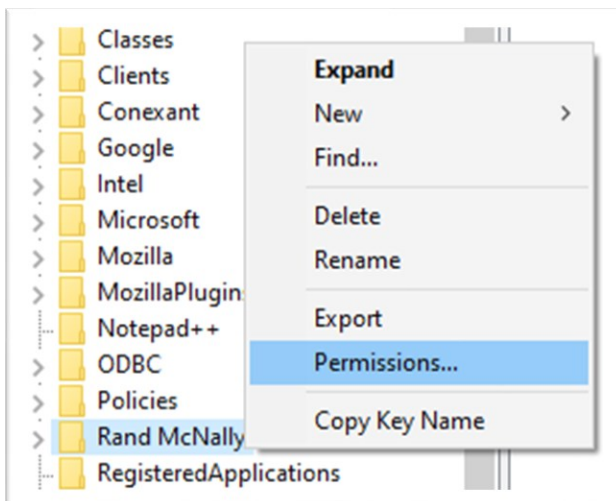


Next: Navigate to one of the following locations depending on the application installation architecture.

For x64 Installations: \HKEY_LOCAL_MACHINE\SOFTWARE\Rand McNally

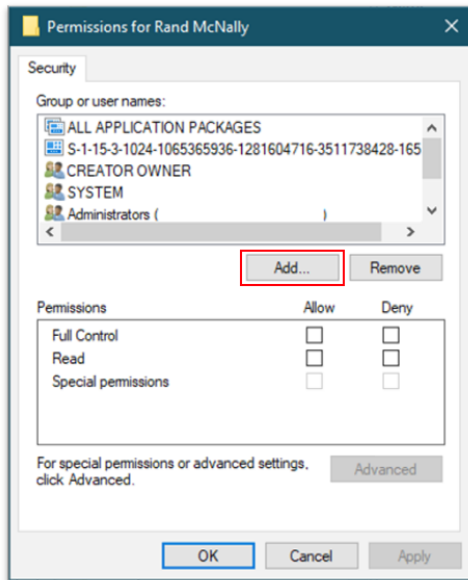
For x86 Installations: \HKEY_LOCAL_MACHINE\SOFTWARE\WOW6432Node\Rand McNally

Then: Right click on "Rand McNally" and select permissions



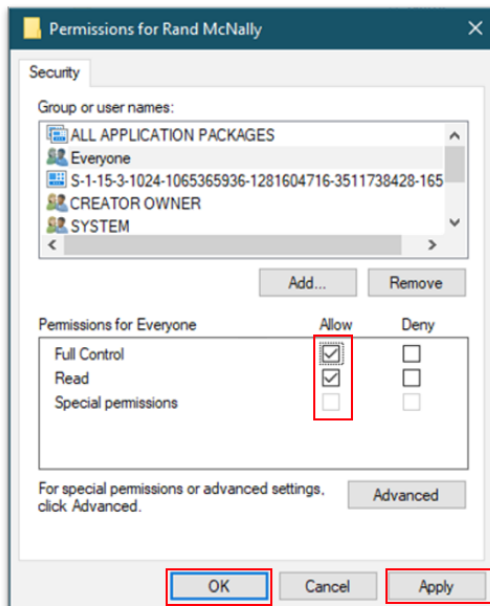
Step 7: Configuring the Registry

Click on [Add]



Next: Add the group "Everyone" and assign "Full Control"

Then select Apply & OK. You may now close all Registry Editor related windows.



Step 7: Configuring Program Files Permissions

Configuring File Permissions

► Default Installation Locations can be found below.

For x64 Installations - C:\Program Files\Rand McNally

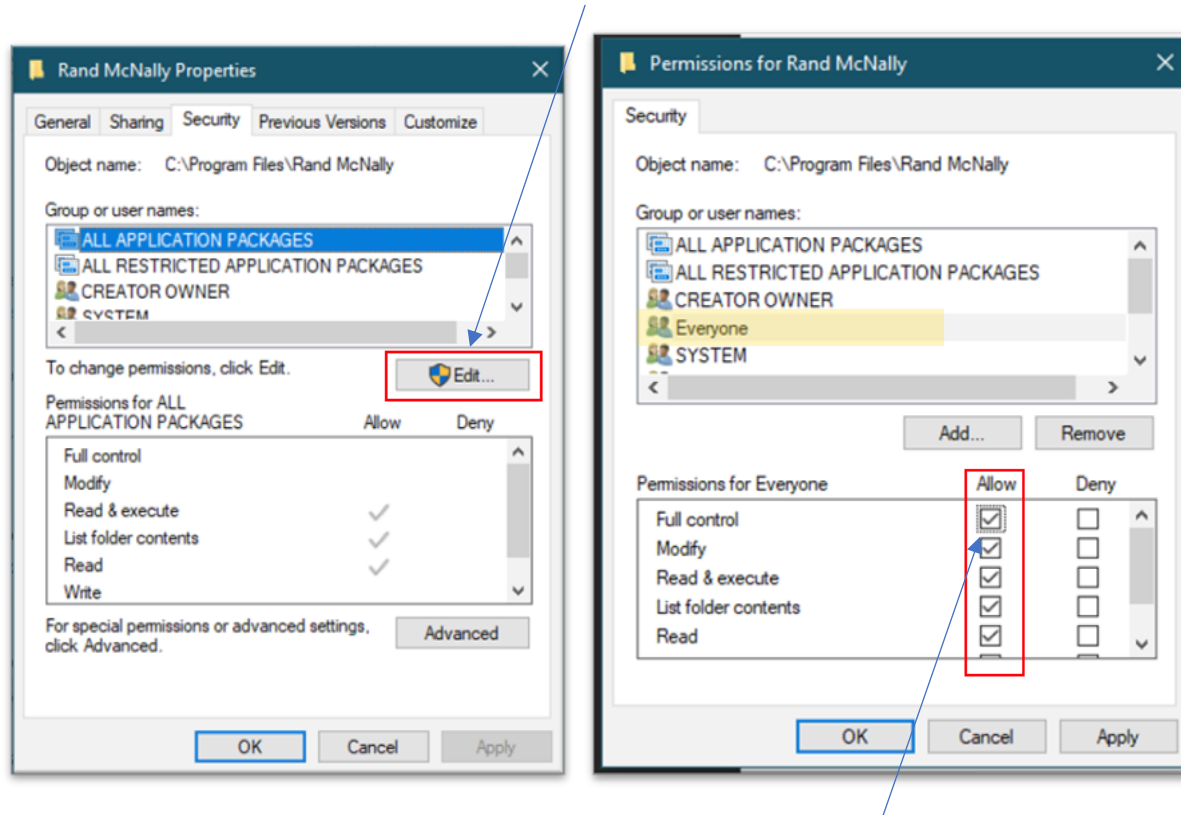
For x86 Installations - C:\Program Files (x86)\Rand McNally

Right click on the "Rand McNally" folder, and select "Properties"



Then, select the "Security" tab.

Once the properties window opens, select on Edit.



Click Allow next to Full Control, then select Apply & OK

Your Installation & Configuration of IntelliRoute with MileMaker® is complete.

Please save this guide for future reference.

For MileMaker Support or Sales, contact 800.234.4069